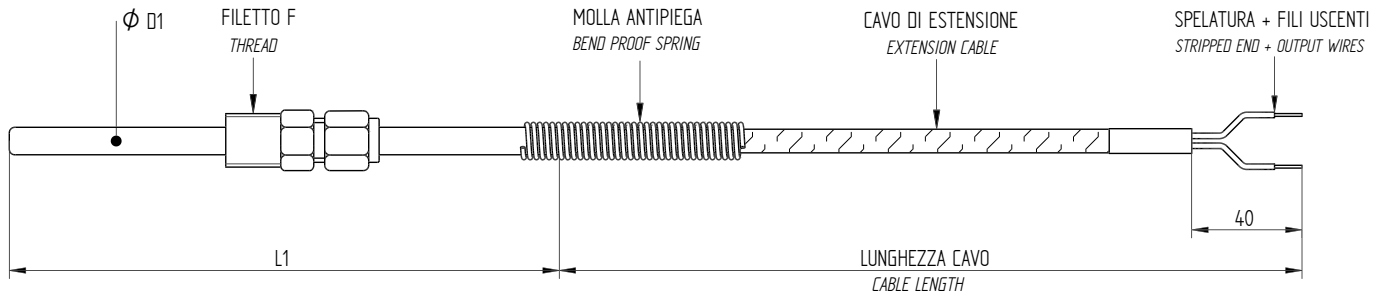


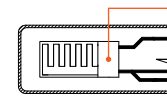
## TERMORESISTENZA CON RACCORDO SCORREVOLE RESISTANCE THERMOMETER WITH SLIDING FITTING



LA TEMPERATURA DI LAVORO DELLA TERMORESISTENZA È IN FUNZIONE DEL TIPO DI CAVO UTILIZZATO  
THE RESISTANCE THERMOMETER'S WORKING TEMPERATURE DEPENDS ON THE TYPE OF CABLE USED

CAVO DI ESTENSIONE ISOLATO INSULATED EXTENSION CABLE	
<b>GS</b>	Isolamento gommasilicone + Guaina gommasilicone (-60° C / +180° C) Silicon rubber insulation + Silicon rubber sheath (-60° C / +180° C)
<b>TTS</b>	Isolamento fibra di vetro siliconato + Maglia rame stagnato (-25° C / +350° C) Fibre glass insulation + Tin plated copper braid (-25° C / +350° C)
<b>PTFE</b>	Isolamento PTFE nastrato + Guaina PTFE nastrato (-200° C / +280° C) PTFE wrapped tape + PTFE wrapped tape (-200° C / +280° C)
<b>MFA</b>	Isolamento Hyflon MFA + Guaina Hyflon MFA (-200° C / +250° C) Hyflon MFA insulation + Hyflon MAF seath (-200° C / +250° C)
<b>MFS</b>	Isolamento Hyflon MFA + Guaina gommasilicone (-40° C / +200° C) Hyflon MFA insulation + Silicon rubber sheath (-40° C / +200° C)

TERMORESISTENZA RESISTANCE THERMOMETER	
<b>PT100</b>	100 $\Omega$ a / at 0° C
<b>Classe A Class A</b>	$\pm 0,30^\circ$ C a / at 0° C



Elemento sensibile  
Sensitive element

### SCHEMA DI COLLEGAMENTO CONNECTION DIAGRAM

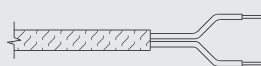


TOLLERANZA DELL'ELEMENTO SENSIBILE SECONDO IEC 751 CLASSE B  
SENSITIVE ELEMENT'S TOLLERANCE ACCORDING TO IEC 751 CLASS B

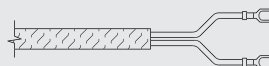
DIAMETRO TUBETTO (D1) TUBE DIAMETER (D1)		
$\phi$ 3 mm	$\phi$ 4 mm	$\phi$ 6 mm
MATERIALE TUBETTO TUBE MATERIAL		
Acciaio inox AISI 303 Stainless steel AISI 303		

FILETTO (F) THREAD (F)		
1/8" Gas	1/4" Gas	3/8" Gas
MATERIALE RACCORDO FITTING MATERIAL		
Acciaio inox AISI 303 Stainless steel AISI 303		

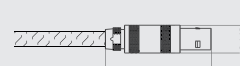
### ESECUZIONE TERMINAZIONE EXECUTION TERMINATION



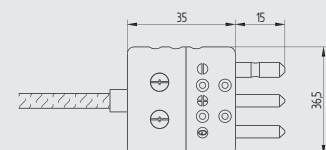
Conduttori liberi  
Flyng leads



Capicorda  
Lugs



Connettore Lemo  
Lemo connector



Connettore standard  
Standard connector

Le informazioni contenute nella presente scheda tecnica non sono vincolanti. Crei riserva il diritto di apportare modifiche senza preavviso alcuno.  
The informations contained in this technical data sheet are not binding. Crei reserves the right to make changes without prior notice.